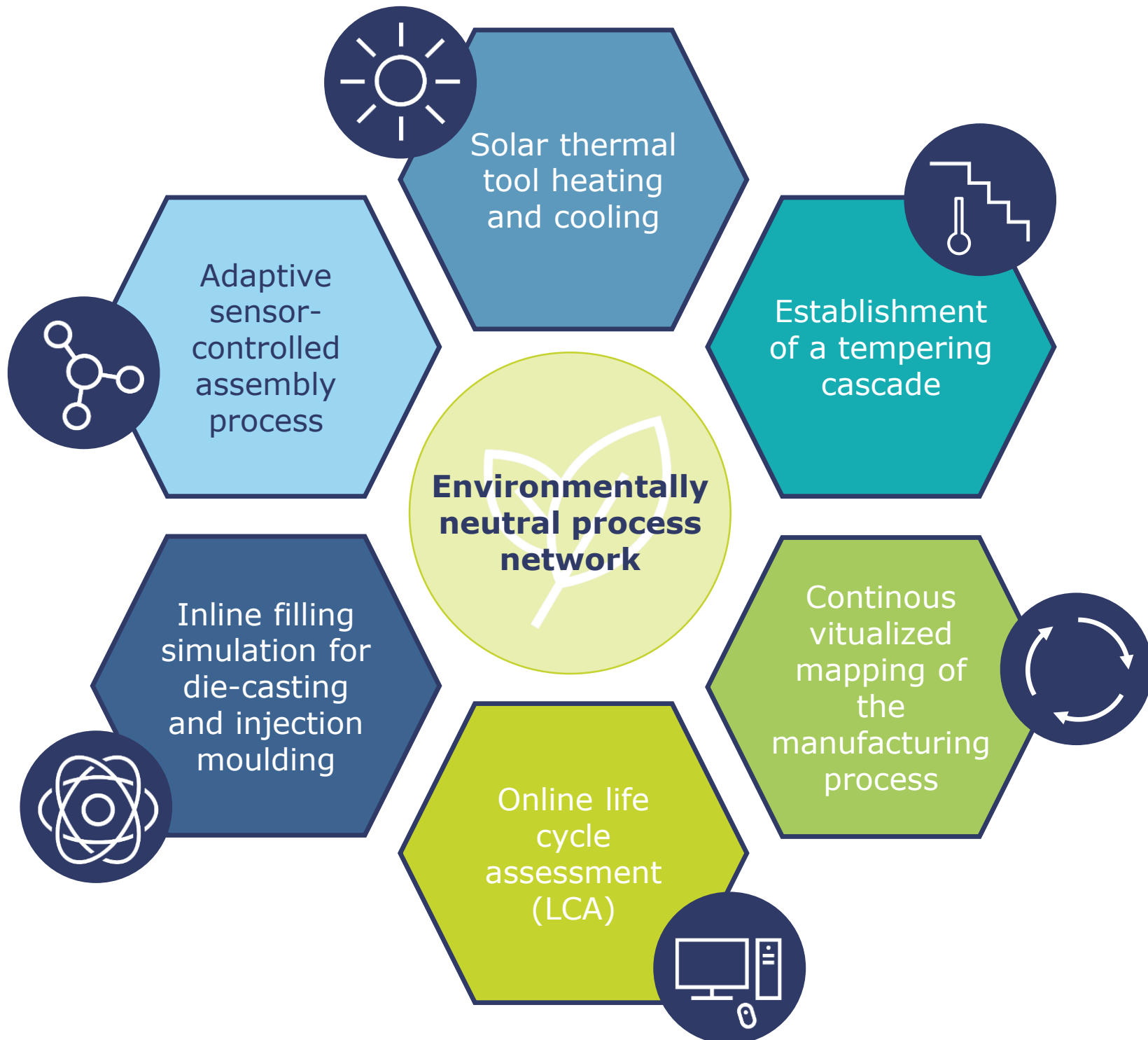
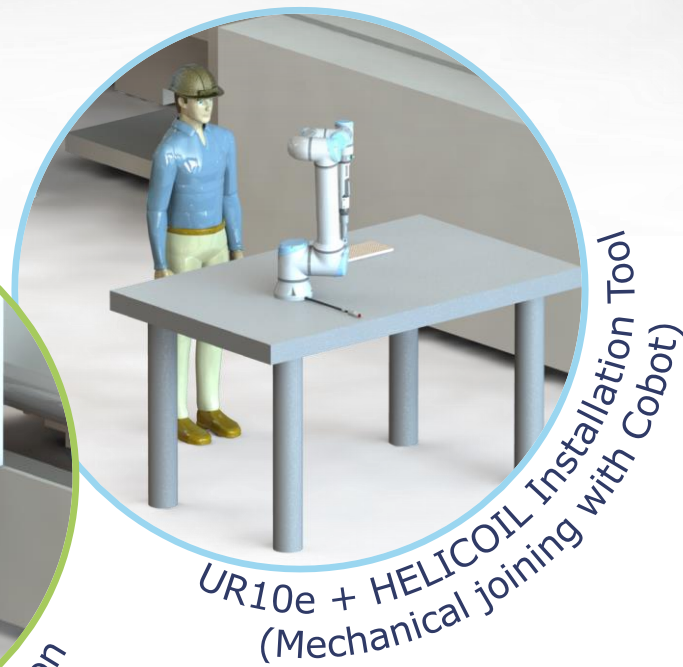
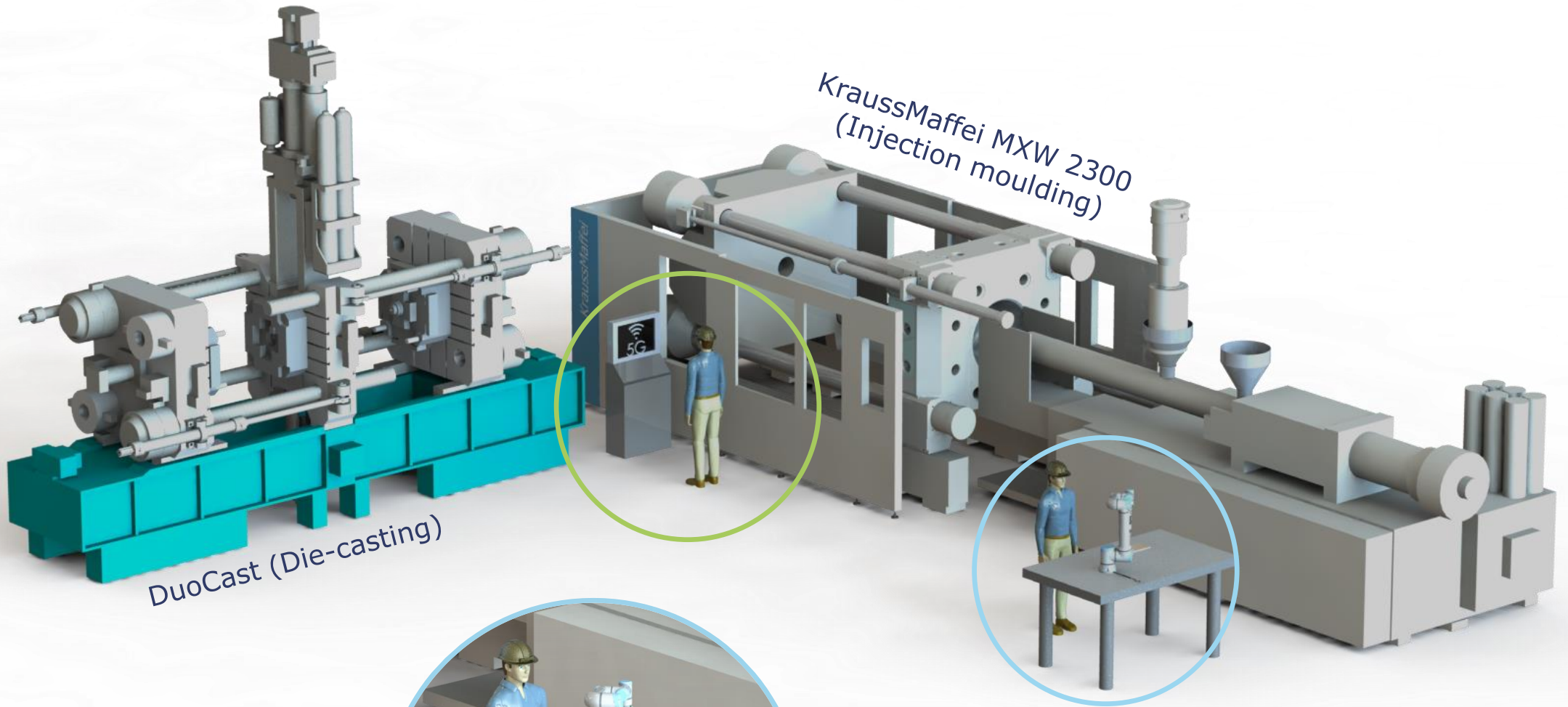


METEOR =

Methods and **t**echnologies for validating and **o**ptimising the **r**esource efficiency of process networks in the manufacture of hybrid lightweight structures

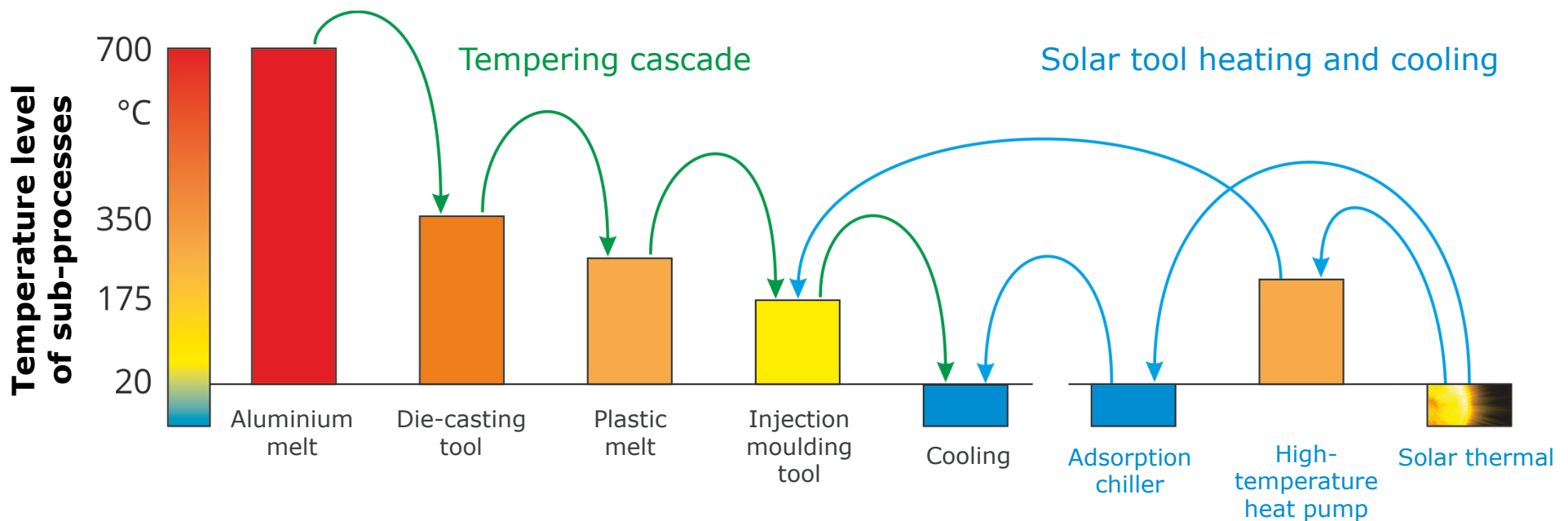
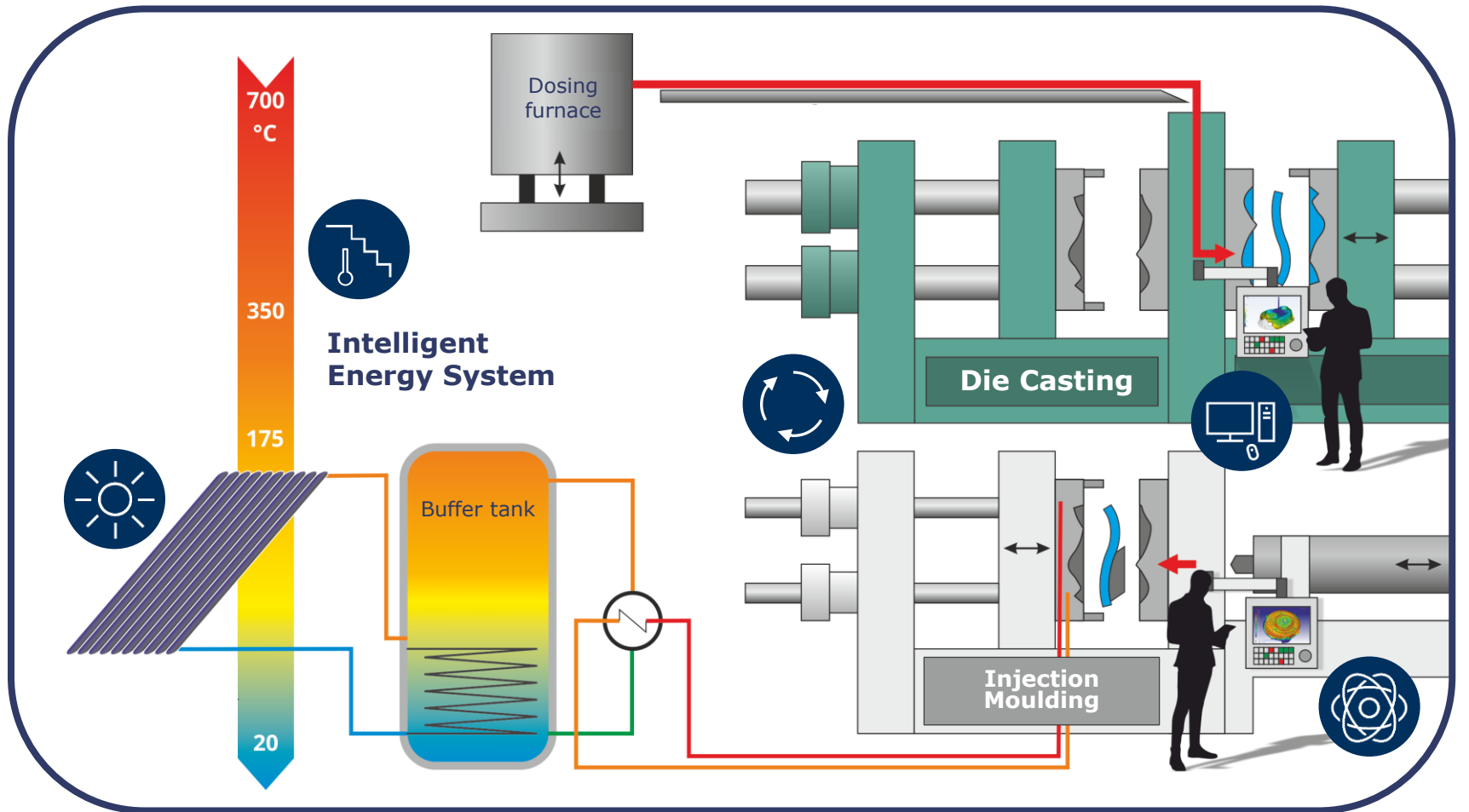




- 1 Die-casting (aluminium)
- 2 Injection moulding (plastic)
- 3 Mechanical joining

Hybrid lightweight structure

Extension of the process system
with an intelligent energy system





LEIV – Leichtbau-Validierungszentrum
National Lightweight Technology Validation Center

Zwickauer Straße, Dresden